
NECF Training & Conference Centre

2017-2018 Prospectus



Contact Details:

Tel: 045 933 2900

Fax: 045 933 2905

Cell: 076 035 9216

Email: info@necf.co.za



www.necf.co.za

Training is not our job. It's our passion

NECF IS A COMPANY OF THUNDERFLEX3 PTY LTD Reg: 2004/017071/07

Contents	
Contact Details:.....	1
Contents.....	2
Introduction.....	3
History.....	3
Our Vision	4
Our Core Values	4
What We Offer	4
Lecture Facilities	5
Accommodation Facilities	6
Courses	7
Training at the NECF Training Centre	8
Renting our Facility.....	9
Map and Directions	10



Introduction

NECF Training Centre provides professional accredited and up to date Training in the Forestry, Wood products, Agriculture and IT through dedicated and competent training staff which enhances the National Skills Base.

We are the only Forestry Training Centre in the North-East Cape Province and are able to service an area of over 500km radius due to the fact that we can travel and bring training to you on your premises.

This Training Centre is accredited by FP&M SETA (Fiber Processing and Manufacturing SETA), AGRISETA, and the MiCTSETA which offers computer training, Pastel and Bookkeeping Fundamentals.

All training material used by the Centre conforms to the unit standards required by the respective Training Authorities and were drafted to provide the most relevant and cost-effective training exposure to course participants. As the Training Authorities update or amend unit standards and/or training outcome requirements, our highly skilled staff incorporate the changes into the training material to keep it updated, compliant and applicable. New training material is developed constantly to ensure that we remain current.

History

NECF was the brainchild of Martin Stander, a previous Human Resource Manager at NECF. The NECF Training Centre was launched in 2011 with the purpose to serve as a local accredited training provider to do all the internal training of NECF and the PG Bison Board plant as well as the farmers in the area and the local community. After Martin went on pension, the management was taken over by Nadine Wells, who managed the centre for another 3 years before immigrating to Australia.

Prior to 2011, Skills Unlimited played their part behind the scene. We were responsible for the accreditation of the centre and did all the ETQA inspections and moderations to guarantee compliance and quality of learning that took place at NECF.

Skills Unlimited

Skills Unlimited was founded and is managed by their CEO, Dr LM Grobler. The company has its humble beginning in 2003. NECF is one of three areas that are managed by Skills Unlimited. With their Head office in Limpopo, they manage projects all over the country and nationally. The second office is situated in the Southern Cape where the same range of training and development products is offered. Since 2003, Dr Grobler has been part of forums participating in the development of the current Lumber Milling Qualifications as well as a consultant regarding the development of the Forestry qualifications. During 2016 he was a Quality Development Partner with the QCTO that assisted in the development of qualifications in the Lumber Milling Qualifications.

*** Skills Unlimited and NECF Training and Conference Centre, are companies of Thunderflex3 PTY (Ltd) which is a Level 4 BBBEE contributor company.*

Our Vision

"We deliver respect, dignity and hope!"

Our Core Values

- ✓ Authentic relationships
- ✓ Passion
- ✓ Making a difference
- ✓ Abundance
- ✓ Professional

We Offer

- ✓ An accredited Training Centre
- ✓ Accredited and Skilled Facilitators
- ✓ Proven skills training programmes that utilises the best available training interventions to achieve the improvement in competencies as required, tailor-made to the client's needs.
- ✓ Productivity and quality improvement in the client's operations a result of the sufficient training of people.
- ✓ Certification of all trainees who complete the training successfully.
- ✓ Continuous course development and upgrades.



Lecture Facilities

We have modern lecture rooms (1 small, 2 x Large), the largest being able to seat 50 people. Our lecture rooms are equipment with the following equipment:

- ✓ Data Projectors and Screens
- ✓ Copy Boards
- ✓ White Boards with Flip Charts
- ✓ The rooms are air-conditioned.

Our lecture facilities are available for hire on a daily basis.

Please contact us on info@necf.co.za for more information in this regard.

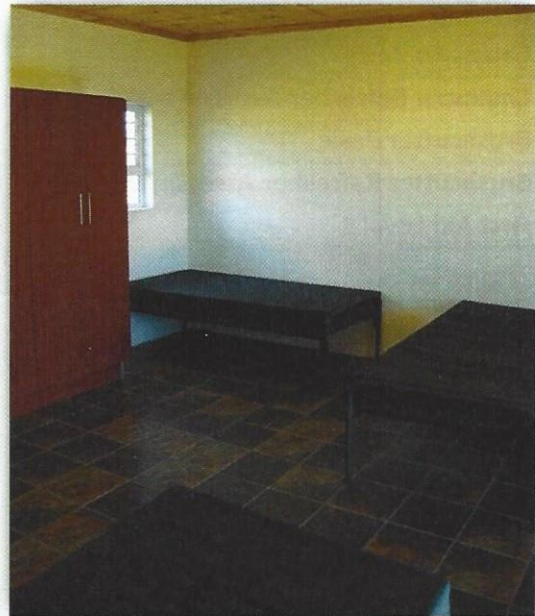
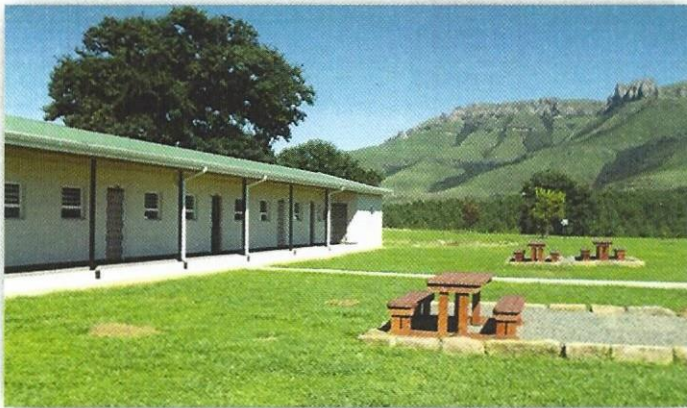
Our Lecturers

All our lecturers are subject matter experts in their field. They are all registered assessors with their relevant SETA and have either tertiary qualifications in their field or years of experience



Accommodation Facilities

We are one of only a few training facilities in South Africa who offer on-site accommodation. We are able to accommodate 24 learners in dormitory style, and we have two additional rooms for teachers or facilitators. The facility has access to a basic self-catering canteen, however we are able to offer the services of a local caterer. A Flat screen TV with the Compact package of DSTV is fitted in the canteen. Rooms are equipped with 6 beds and a wardrobe.



***If you would be interested in using our accommodation, please get in touch with us.*

Courses

Forestry and related:

- ✓ Chainsaw Basic
- ✓ Chains Refresher
- ✓ Chainsaw Advanced
- ✓ Wild Fire Suppression
- ✓ Marking, Pitting, Pruning
- ✓ Knapsack Sprayer and maintenance (Chemical Application) Herbicide /Pesticide
- ✓ Brush cutter Operator
- ✓ Bell Operator

PLEASE NOTE: We have full accreditation for Forestry Learnerships Level 1-3. Should you require anything not listed, please contact us and we will create an accredited program for you

Lumber Milling:

- ✓ Lumber Grading (SANS1783 part 1,2, 3 and 4)
- ✓ Cross Cut operator
- ✓ Machine operator
- ✓ A-Frame operator
- ✓ Planer operator
- ✓ Finger Joint Operator

PLEASE NOTE: We have full accreditation for Lumber Milling Learnerships Level 1-4. Should you require anything not listed, please contact us and we will create an accredited program for you

Statutory Training:

- ✓ SHE Rep
- ✓ Health and Safety
- ✓ Fire Fighting in the workplace
- ✓ First Aid Level 1
- ✓ First Aid Level 2

Other training:

- ✓ ABC of Supervisors
- ✓ Supervisor – Intermediate
- ✓ Supervisor – Advanced

Computer training:

- ✓ Excel Introduction
- ✓ Excel Advanced
- ✓ Word - Entry Level
- ✓ Word – Advanced
- ✓ Basic Computer Skills
- ✓ Keyboard Skills
- ✓ Internet and email

Agriculture components:

- ✓ Cattle farming
- ✓ Horticulture
- ✓ Vegetable gardening
- ✓ Nursery practices

Other related services.

- ✓ SDF Services (WSP/ATR assistance)
- ✓ Material alignment and development.
- ✓ Accreditation with specific SETA
- ✓ Education and Training Consultants
- ✓ Skills Planning
- ✓ HIV Training
- ✓ Fire awareness for communities and schools

Training at the NECF Training Centre

Training at our facility has a range of benefits. Our center is located in a remote part of the plantation to encourage a peaceful and undisturbed learning environment.

At times there could be a need for training for a few individuals only, but the cost of having training done at the clients place of business, does not warrant the expense of a full course. There will also be times that a client's operations are spread over a large area geographically, and the client will require a central place to accomplish their training requirements.

Here at the training center we are able to offer the opportunity to join a pre-scheduled training session, at an individual rate. Lecture Facilities can also be hired on a daily basis.

By using the training center for larger training requirements, the client can eliminate the logistics of daily travel or the constant interruptions which occur in the work place.

Layout if you would like to send full groups for your company only

Course	No of Days	Maximum No. of Learners per Course
Wild Fire Suppression Basic	3	20
Wild Fire Suppression Refresher	1	20
Fire Awareness	1	20
Marking, Pitting & Planting	3	20
Pruning	1	20
Chemical Application Basic	3	20
Chemical Application Refresher	1	20
SHE Rep	2	20
Chainsaw Basic	10	10
Chainsaw Refresher	1	10
Brushcutter Basic	5	10
Brushcutter Refresher	1	10
First Aid Level 1 or 2	3	12

****Please contact us regarding other training programs and rates for sending full groups to our center for training**

Renting our facilities:

You may be looking for a facility to have a meeting, mini conference or even a training session.

Lecture Room Hire per Day.....	R 2500.00 per day
Tea Breaks (2 x Breaks) per person per day, Incl. baked goods...	R 25.00 per break
Lunch per person per day.....	R 120.00
Student Accommodation per Day (Including 3 meals per day)	R 350.00
Room only	R 200.00

Check in: on the day of training from 08H00 or before 16H00 the previous day

Check out: after training or by 16H00 on the day training ends

Please take note:

Prices are subject to change without notification.

Prices exclude 14% VAT.

Cellphone reception

Vodacom: Strongest signal all over

MTN: Not inside the buildings but outside

DSTV

The canteen has a TV with the Compact channels for your viewing pleasure.

Directions

Take the road between Ugie and Maclear (R56)

Turn off as if you are going to the board plant.

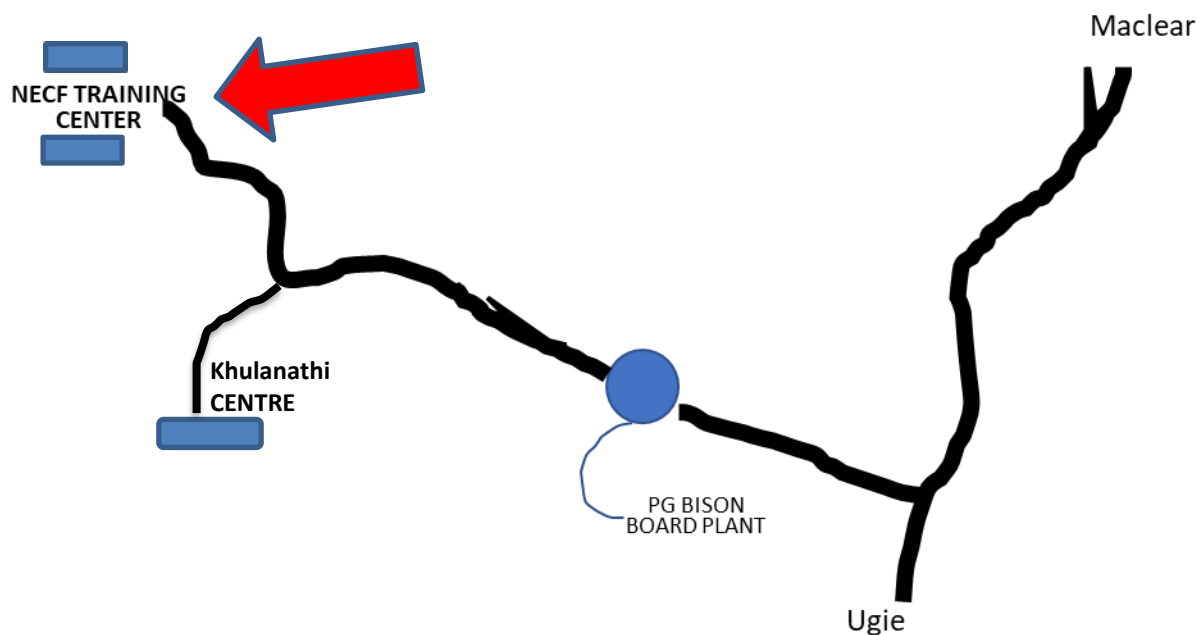
At the circle, take the 12'clock exit on the dirt road.

Travel for about 12 km.

Follow the directions to the centre that will be situated on your left

GPS Coordinates: 31°04'26.40"S 28°12'54.00"E

MAP



For any further information, please contact us or email at info@necf.co.za